



# Flinthills Mall

1632 Industrial Road - Emporia



**Retail  
SPACE**

**FOR LEASE**

*Emporia, KS*

Regional Mall located in the center of Emporia's exciting and growing commercial district. Anchor merchants include Sutherland Lumber and Dunham's Sports. Additional merchants include B&B Theater, Harbor Freight, Bath & Body Works, Buckle, Hibbett Sports, Maurices, Shoe Sensation, Petsense, Claire's and Bling.

## Space Available:

**Space 1-121**

**2,340 SF**

All information furnished regarding property for sales, rent, exchange, or financing is from sources deemed reliable, but no guarantee is made, or responsibility assumed as to its accuracy or completeness and you are advised to make your own analysis and verification. Broker hereby notifies prospective buyer/lessee that (a) Broker will be acting as an agent of seller/lessor with the duty to represent seller/lessor's interest; (b) Broker will not be the agent of buyer/lessee; and (c) information given to Broker will be disclosed to seller/lessor.

## Details:

- Building Size: 252,000 SF
- Zoning: Commercial
- Lease Rate: Negotiable



**Clarence Frye**

**620.342.4631**

*cfrye@weigandomega.com*



**David Lewis**

**316.263.2215**

*dlewis@weigandomega.com*



**Weigand-Omega Management, Inc.**  
333 S. Broadway Ave  
Wichita, KS 67202-4325

***WeigandOmega.com***

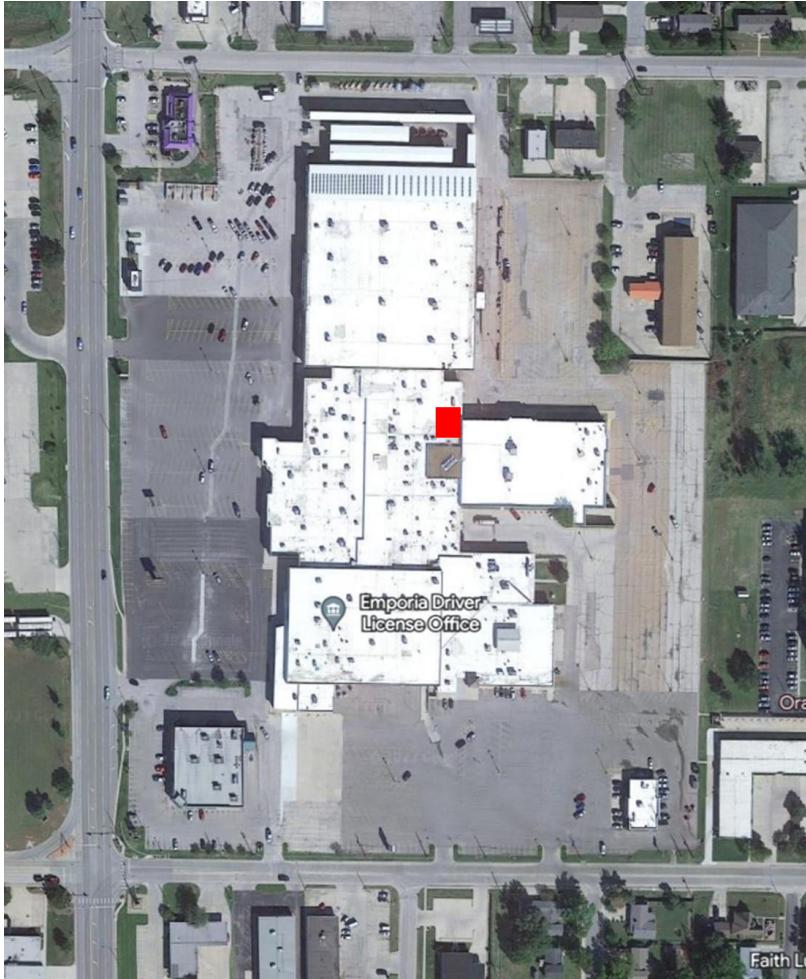


# Flinthills Mall - Suite 1-121

1632 Industrial Road, Emporia, KS 66801

AERIAL VIEW

INTERIOR/EXTERIOR



**Clarence Frye**  
**620.342.4631**  
*cfrye@weigandomega.com*



**David Lewis**  
**316.263.2215**  
*dlewis@weigandomega.com*



**Weigand-Omega Management, Inc.**  
333 S. Broadway Ave  
Wichita, KS 67202-4325

**WeigandOmega.com**

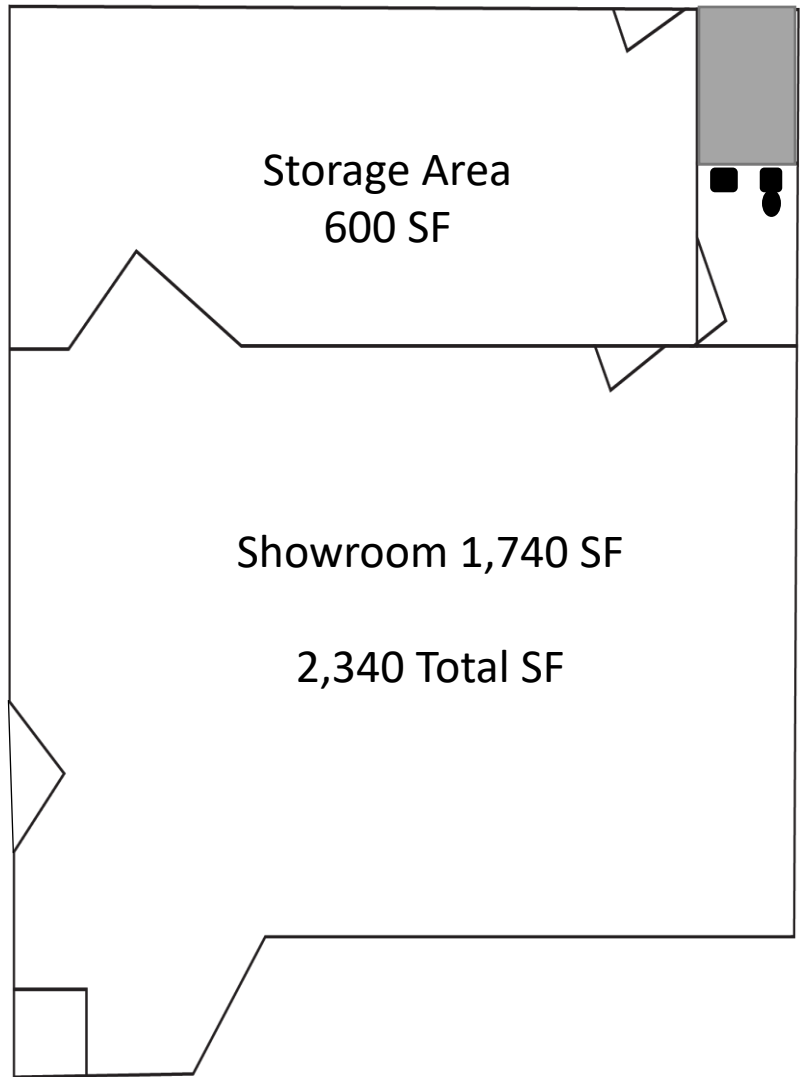


# Flinthills Mall - Suite 1-121

1632 Industrial Road, Emporia, KS 66801

## FLOORPLAN

Delivery



Conveniently located near Dunham's Sports interior Mall entry

1 – 6 ton Trane HVAC

100 Amp 120-240VAC



**Clarence Frye**

**620.342.4631**

*cfrye@weigandomega.com*



**David Lewis**

**316.263.2215**

*dlewis@weigandomega.com*



**Weigand-Omega Management, Inc.**  
333 S. Broadway Ave  
Wichita, KS 67202-4325

***WeigandOmega.com***





# Flinthills Mall - Emporia, KS

1632 Industrial Road, Emporia, KS 66801

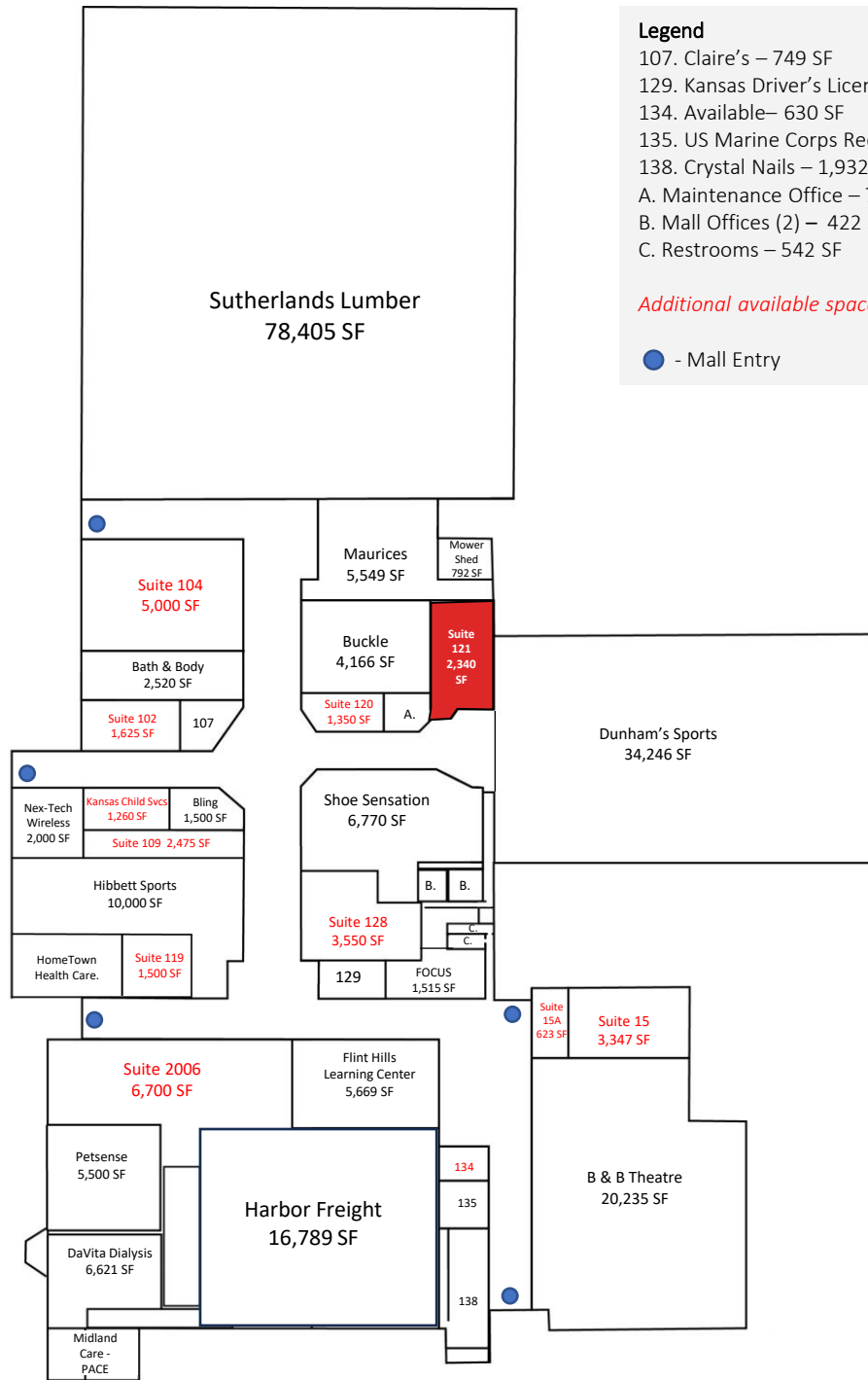
 Scooter's Coffee  
2,000 SF

### Legend

- 107. Claire's – 749 SF
- 129. Kansas Driver's License – 1,008 SF
- 134. Available – 630 SF
- 135. US Marine Corps Recruiting – 677 SF
- 138. Crystal Nails – 1,932 SF
- A. Maintenance Office – 788 SF
- B. Mall Offices (2) – 422 SF
- C. Restrooms – 542 SF

*Additional available spaces in red*

 - Mall Entry



**WeigandOmega.com**



**Weigand-Omega Management, Inc.**  
333 S. Broadway Ave  
Wichita, KS 67202-4325



**David Lewis**  
**316.263.2215**

[dlewis@weigandomega.com](mailto:dlewis@weigandomega.com)