



Flinthills Mall

1632 Industrial Road - Emporia



Retail SPACE **FOR LEASE** *Emporia, KS*

Regional Mall located in the center of Emporia's exciting and growing commercial district. Located near the junction of I-35 Highway and the Kansas Turnpike. Anchor merchants include Sutherland Lumber and Dunham's Sports. Additional merchants include B&B Theater, Harbor Freight, Bath & Body Works, Bling, Buckle, Claire's, Hibbett Sports, NexTech Wireless, Maurice's, Petsense and Shoe Sensation.

Space Available:

Space 1-128	3,550 SF
-------------	----------

Details:

- Building Size: 252,000 SF
- Zoning: Commercial
- Lease Rate: Negotiable

All information furnished regarding property for sales, rent, exchange, or financing is from sources deemed reliable, but no guarantee is made, or responsibility assumed as to its accuracy or completeness and you are advised to make your own analysis and verification. Broker hereby notifies prospective buyer/lessee that (a) Broker will be acting as an agent of seller/lessor with the duty to represent seller/lessor's interest; (b) Broker will not be the agent of buyer/lessee; and (c) Information given to Broker will be disclosed to seller/lessor.



Clarence Frye
620.342.4631
 cfrye@weigandomega.com



David Lewis
316.263.2215
 dlewis@weigandomega.com



Weigand-Omega Management, Inc.
 333 S. Broadway Ave
 Wichita, KS 67202-4325

WeigandOmega.com



Flinthills Mall - Suite 1-128

1632 Industrial Road, Emporia, KS 66801

AERIAL VIEW

INTERIOR/EXTERIOR



Clarence Frye

620.342.4631

cfrye@weigandomega.com



David Lewis

316.263.2215

dlewis@weigandomega.com



Weigand-Omega Management, Inc.
333 S. Broadway Ave
Wichita, KS 67202-4325

WeigandOmega.com



Flinthills Mall - Suite 1-128

1632 Industrial Road, Emporia, KS 66801

Dressing Rooms
(A,B,C&D)

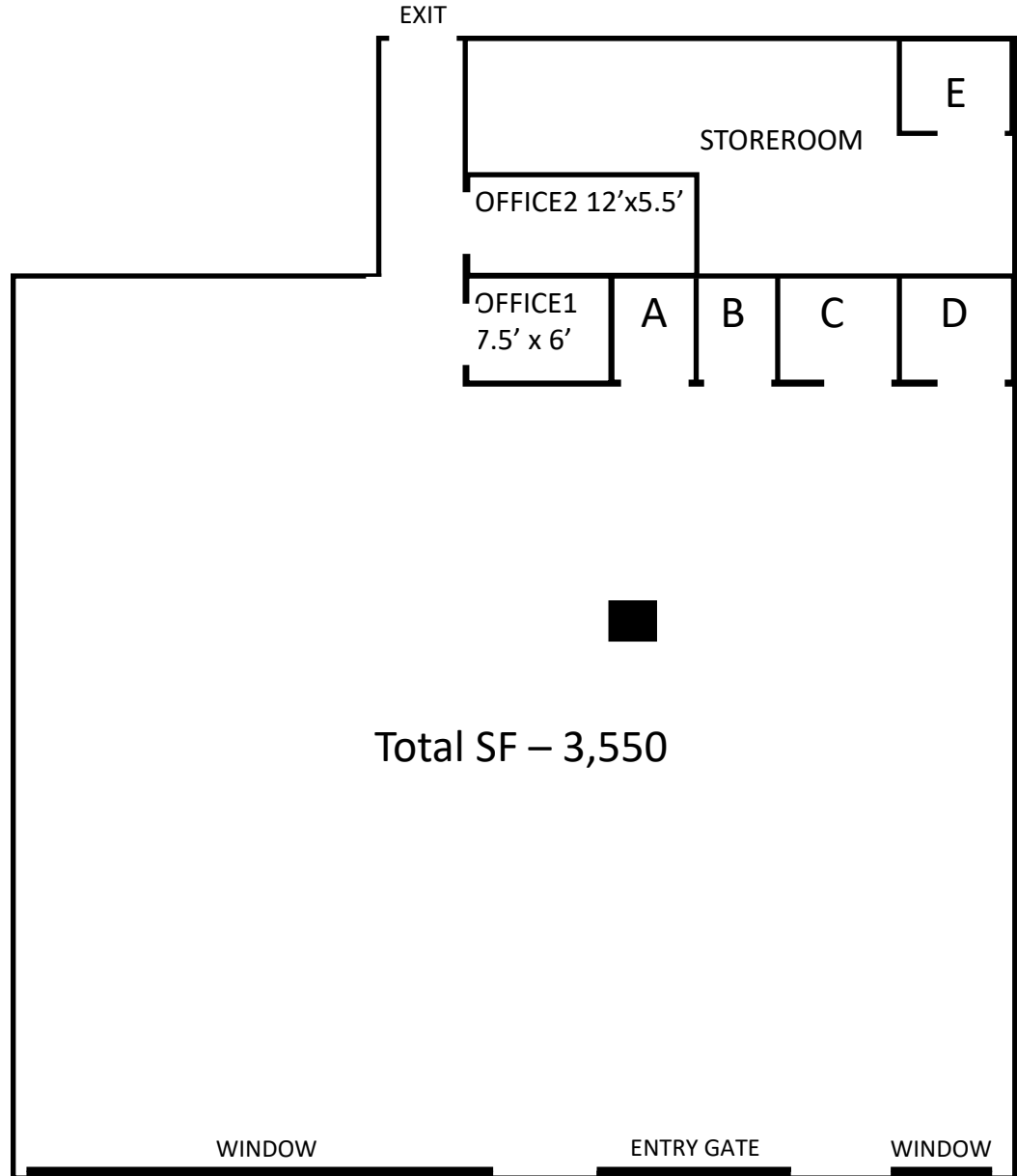
Restroom – E

Hidden loft for storage
above offices

Huge 26' front window

Office1 and dressing
rooms could be
removed for additional
showroom space.

Open to the North-
South Concourse



Clarence Frye
620.342.4631
cfrye@weigandomega.com



David Lewis
316.263.2215
dlewis@weigandomega.com



Weigand-Omega Management, Inc.
333 S. Broadway Ave
Wichita, KS 67202-4325

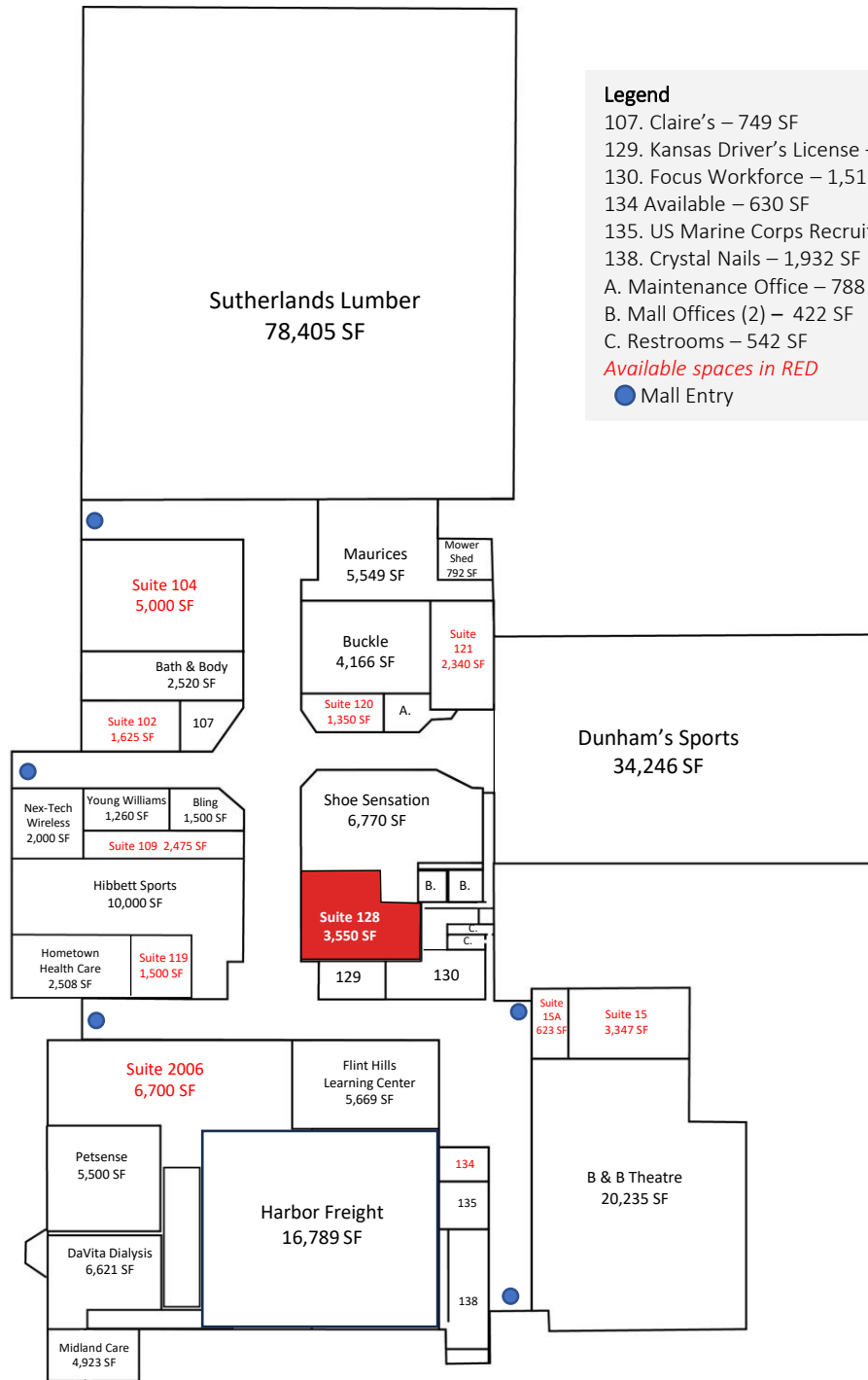
WeigandOmega.com



Flinthills Mall - Emporia, KS

1632 Industrial Road, Emporia, KS 66801


Scooter's Coffee
500 SF



Legend

- 107. Claire's – 749 SF
- 129. Kansas Driver's License – 1,008 SF
- 130. Focus Workforce – 1,515 SF
- 134 Available – 630 SF
- 135. US Marine Corps Recruiting – 677 SF
- 138. Crystal Nails – 1,932 SF
- A. Maintenance Office – 788 SF
- B. Mall Offices (2) – 422 SF
- C. Restrooms – 542 SF
- Available spaces in RED*
-  Mall Entry

WeigandOmega.com



Weigand-Omega Management, Inc.
333 S. Broadway Ave
Wichita, KS 67202-4325



David Lewis
316.263.2215

dlewis@weigandomega.com