



# Flinthills Mall

1632 Industrial Road - Emporia



**Retail SPACE** **FOR LEASE** *Emporia, KS*

Regional Mall located in the center of Emporia's exciting and growing commercial district. Near the junction of I-35 Highway and the Kansas Turnpike.

Anchor merchants include Sutherland Lumber and Dunham's Sports. Additional merchants include B&B Theater, Harbor Freight, Bath & Body Works, Bling, Buckle, Claire's, Hibbett Sports, NexTech Wireless, Maurice's, Petsense and Shoe Sensation.

## Space Available:

Space 1-134	630 SF
-------------	--------

## Details:

- Building Size: 252,000 SF
- Zoning: Commercial
- Lease Rate: Negotiable

All information furnished regarding property for sales, rent, exchange, or financing is from sources deemed reliable, but no guarantee is made, or responsibility assumed as to its accuracy or completeness and you are advised to make your own analysis and verification. Broker hereby notifies prospective buyer/lessee that (a) Broker will be acting as an agent of seller/lessor with the duty to represent seller/lessor's interest; (b) Broker will not be the agent of buyer/lessee; and (c) Information given to Broker will be disclosed to seller/lessor.



**Clarence Frye**

**620.342.4631**

*cfrye@weigandomega.com*



**David Lewis**

**316.263.2215**

*dlewis@weigandomega.com*



**Weigand-Omega Management, Inc.**  
333 S. Broadway Ave  
Wichita, KS 67202-4325

**WeigandOmega.com**



# Flinthills Mall - Suite 1-134

1632 Industrial Road, Emporia, KS 66801

AERIAL VIEW



INTERIOR/EXTERIOR



**Clarence Frye**

**620.342.4631**

*cfrye@weigandomega.com*



**David Lewis**

**316.263.2215**

*dlewis@weigandomega.com*



**Weigand-Omega Management, Inc.**  
333 S. Broadway Ave  
Wichita, KS 67202-4325

***WeigandOmega.com***



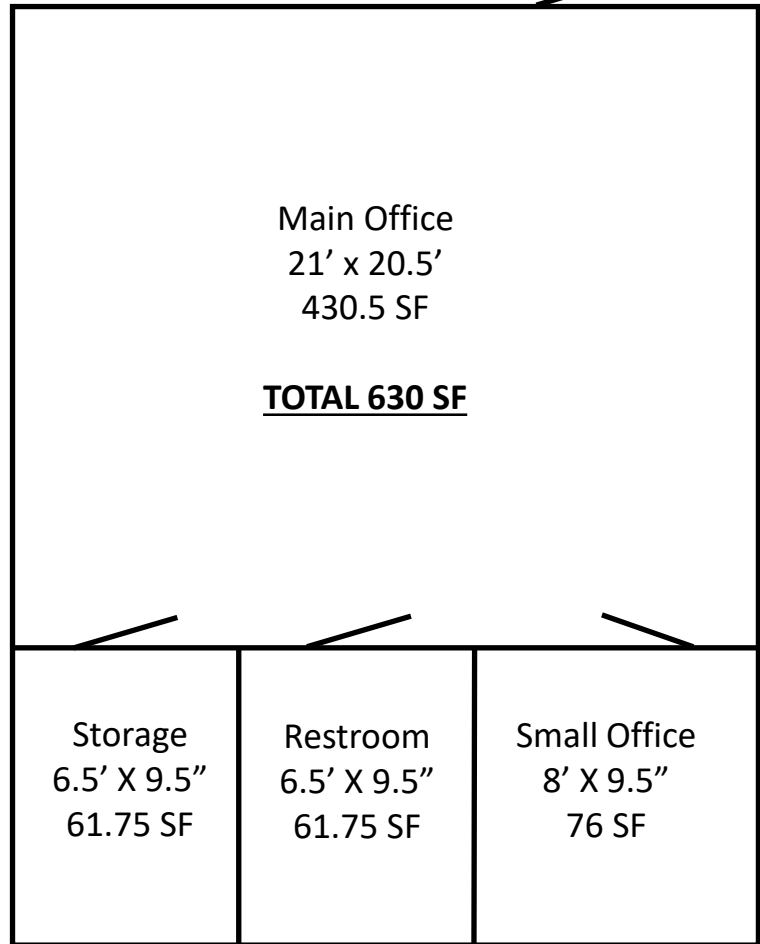
# Flinthills Mall - Suite 1-134

1632 Industrial Road, Emporia, KS 66801

Location offers opportunity for extended hours

Thermostat controlled HVAC

Small Retail or Office



**Clarence Frye**

**620.342.4631**

*cfrye@weigandomega.com*



**David Lewis**

**316.263.2215**

*dlewis@weigandomega.com*



**Weigand-Omega Management, Inc.**  
333 S. Broadway Ave  
Wichita, KS 67202-4325

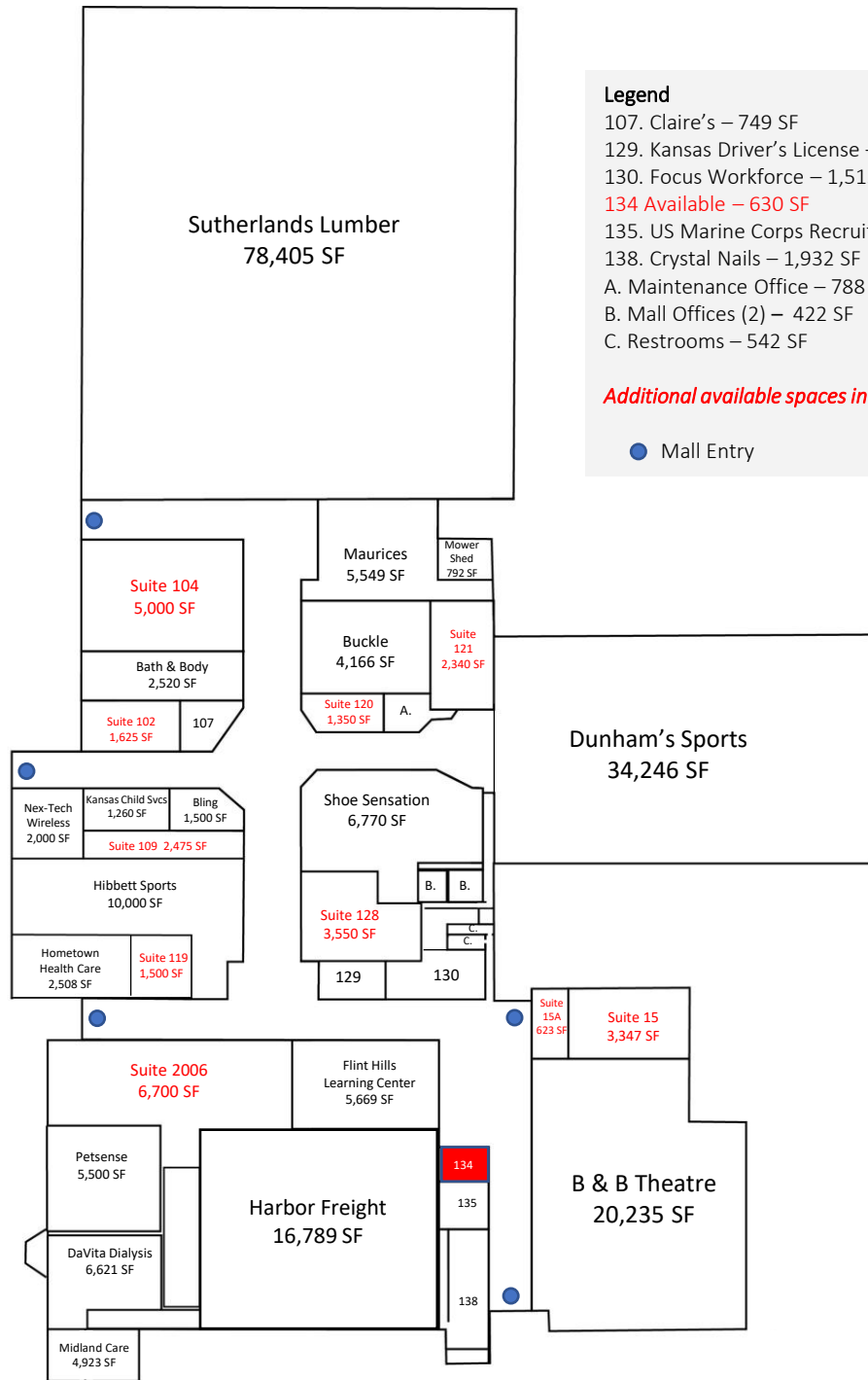
***WeigandOmega.com***



# Flinthills Mall - Emporia, KS

1632 Industrial Road, Emporia, KS 66801

  
Scooter's Coffee  
2,000 SF



### Legend

- 107. Claire's – 749 SF
- 129. Kansas Driver's License – 1,008 SF
- 130. Focus Workforce – 1,515 SF
- 134 Available – 630 SF**
- 135. US Marine Corps Recruiting – 677 SF
- 138. Crystal Nails – 1,932 SF
- A. Maintenance Office – 788 SF
- B. Mall Offices (2) – 422 SF
- C. Restrooms – 542 SF

**Additional available spaces in red**

 Mall Entry

**WeigandOmega.com**



**Weigand-Omega Management, Inc.**  
333 S. Broadway Ave  
Wichita, KS 67202-4325



**David Lewis**  
**316.263.2215**

[dlewis@weigandomega.com](mailto:dlewis@weigandomega.com)