



# Flinthills Mall

1632 Industrial Road - Emporia



**Retail SPACE** **FOR LEASE** Emporia, KS

Regional Mall located in the heart of Emporia's exciting and growing commercial district. Anchors include Sutherland Lumber and Dunham's Sports. Other tenants include B&B Theater, Harbor Freight, Bath & Body Works, Bling, Buckle, Claire's, Hibbett Sports, NexTech Wireless, Maurices, Petsense and Shoe Sensation.

## Space Available:

Space 15	3,975 SF
----------	----------

## Details:

- Building Size: 252,000 Sq. Ft.
- Zoning: Commercial
- Lease Rate: Negotiable

All information furnished regarding property for sales, rent, exchange, or financing is from sources deemed reliable, but no guarantee is made, or responsibility assumed as to its accuracy or completeness and you are advised to make your own analysis and verification. Broker hereby notifies prospective buyer/lessee that (a) Broker will be acting as an agent of seller/lessor with the duty to represent seller/lessor's interest; (b) Broker will not be the agent of buyer/lessee; and (c) Information given to Broker will be disclosed to seller/lessor.



**Clarence Frye**  
**620.342.4631**  
 cfrye@weigandomega.com



**David Lewis**  
**316.263.2215**  
 dlewis@weigandomega.com



**Weigand-Omega Management, Inc.**  
 333 S. Broadway Ave  
 Wichita, KS 67202-4325

**WeigandOmega.com**



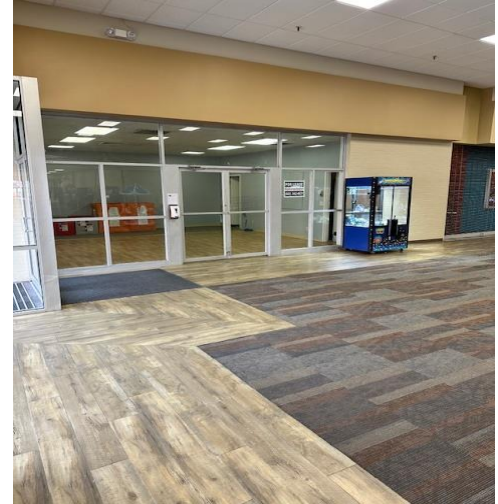
# Flinthills Mall - Suite 15

1632 Industrial Road, Emporia, KS 66801

AERIAL VIEW



INTERIOR/EXTERIOR



**Clarence Frye**

**620.342.4631**

*cfrye@weigandomega.com*



**David Lewis**

**316.263.2215**

*dlewis@weigandomega.com*



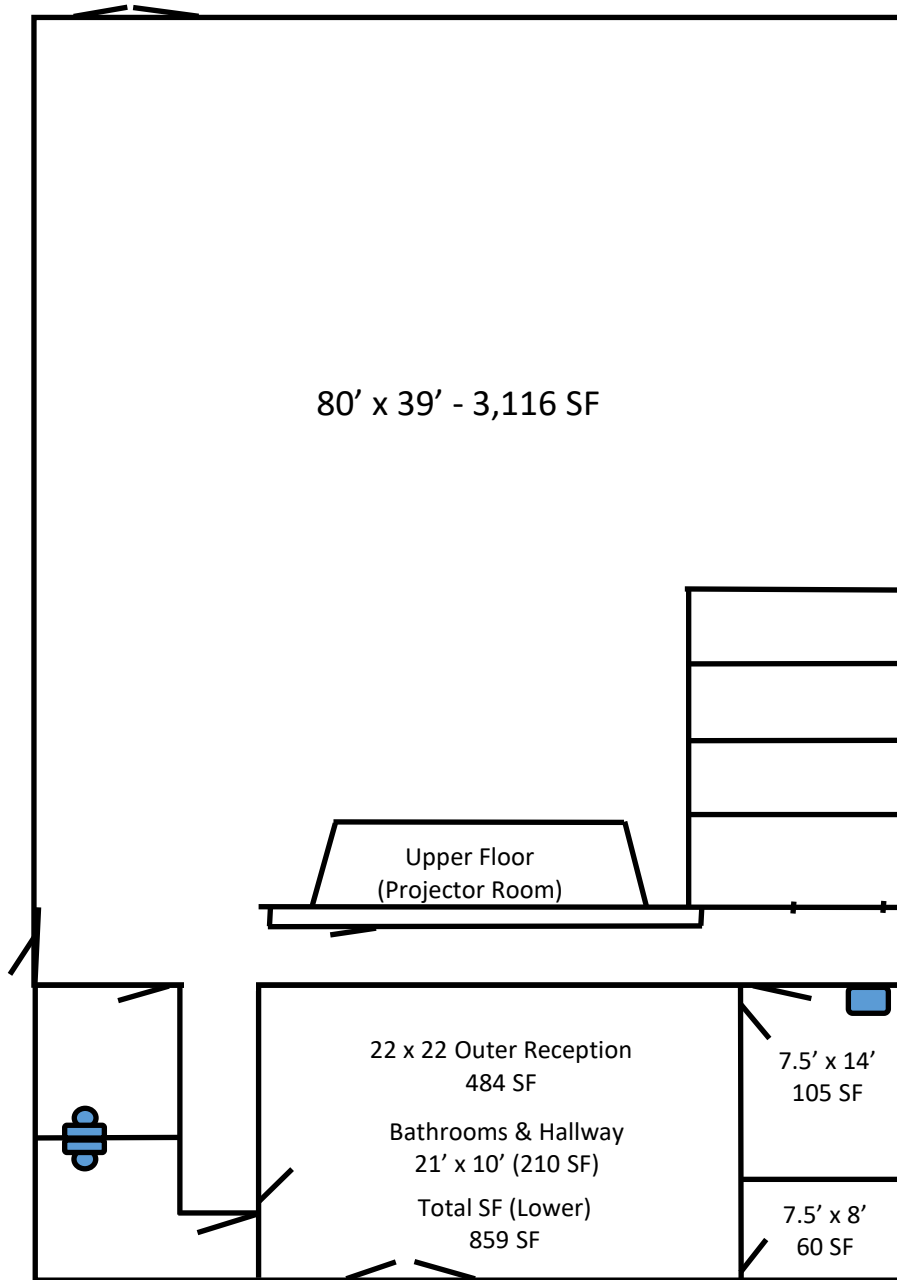
**Weigand-Omega Management, Inc.**  
333 S. Broadway Ave  
Wichita, KS 67202-4325

***WeigandOmega.com***



# Flinthills Mall - Suite 15

1632 Industrial Road, Emporia, KS 66801



**Clarence Frye**

**620.342.4631**

[cfrye@weigandomega.com](mailto:cfrye@weigandomega.com)



**David Lewis**

**316.263.2215**

[dlewis@weigandomega.com](mailto:dlewis@weigandomega.com)



**Weigand-Omega Management, Inc.**  
333 S. Broadway Ave  
Wichita, KS 67202-4325

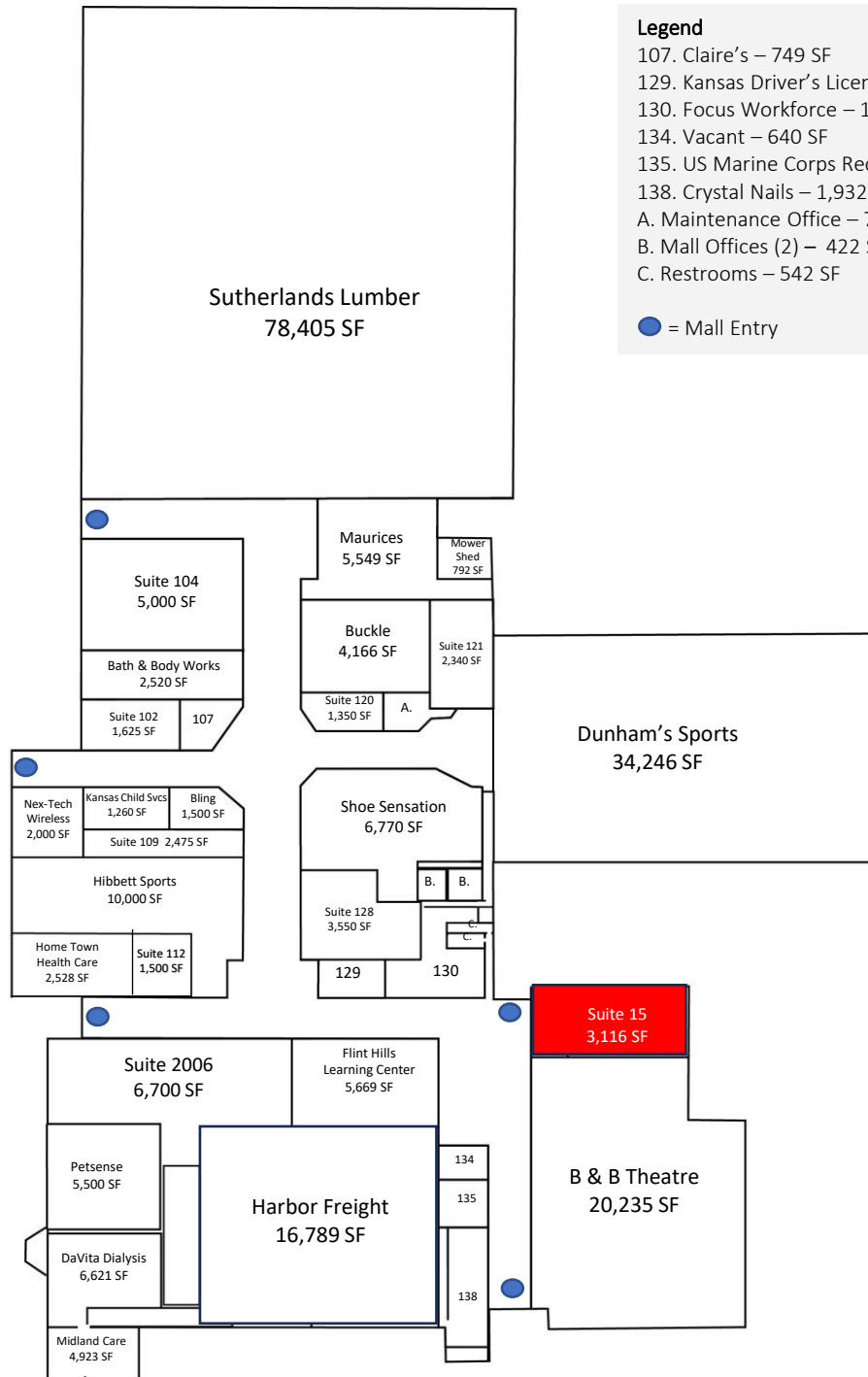
***WeigandOmega.com***



# Flinthills Mall - Emporia, KS

1632 Industrial Road, Emporia, KS 66801

  
Scooter's Coffee  
2,000 SF



- Legend**
- 107. Claire's – 749 SF
  - 129. Kansas Driver's License – 1,008 SF
  - 130. Focus Workforce – 1,515 SF
  - 134. Vacant – 640 SF
  - 135. US Marine Corps Recruiting – 677 SF
  - 138. Crystal Nails – 1,932 SF
  - A. Maintenance Office – 788 SF
  - B. Mall Offices (2) – 422 SF
  - C. Restrooms – 542 SF
-  = Mall Entry

[WeigandOmega.com](http://WeigandOmega.com)



**Weigand-Omega Management, Inc.**  
333 S. Broadway Ave  
Wichita, KS 67202-4325



**David Lewis**  
**316.263.2215**

[dlewis@weigandomega.com](mailto:dlewis@weigandomega.com)